



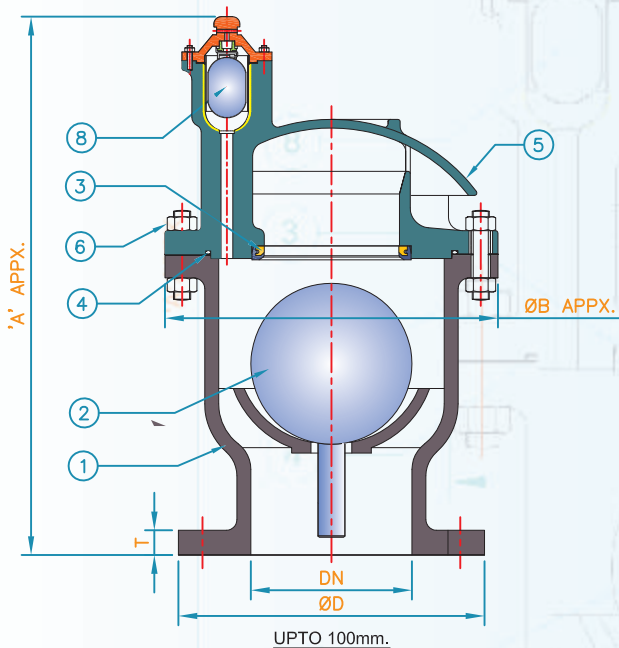
The NEW 'Combination Type Tamper-proof AIR VALVES'

Accumulated air can cause catastrophes to the water transmission pipelines. Generation of vacuum leads to pipeline implosion or pressure transients. The preventive course is use of efficient Air Release Valves & use of Anti - Vacuum Valves at the critical locations of the pipeline that are prone to vacuum generation.

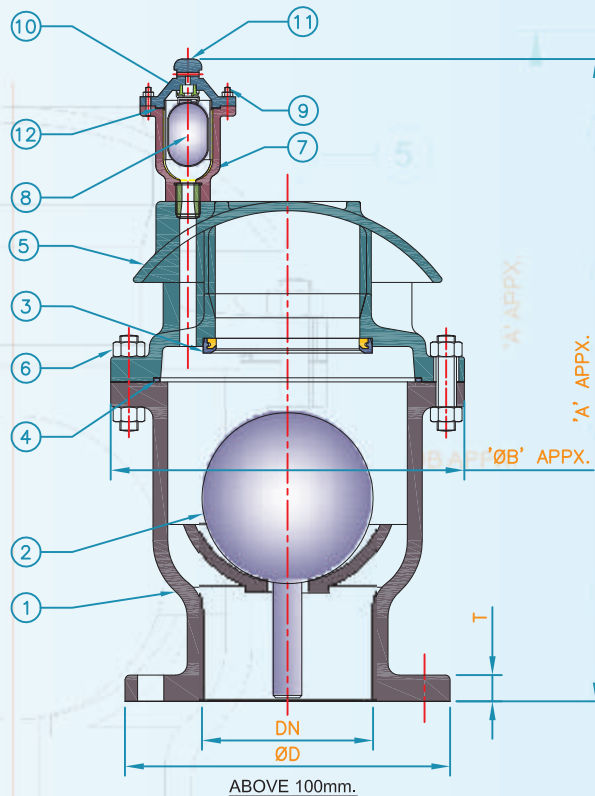
The new series of R & D Multiples Air-Vacuum Valves & Air Release Valves combine excellent features & best workmanship to make them the first preference of the discerning customers. The choice that ensures efficient filling & draining of the pipeline & consistent removal of the released air years on.

The R & D Multiple's Anti-Vacuum Valves are designed & manufactured to be extremely responsive & sensitive to the pressure decrease in the line. They instantly allow the entry of sufficient quantity of air at the slight hint of the inception of vacuum & preclude the possibility of vacuum build - up.

SINGLE CHAMBER COMBINATION TYPE TAMPER-PROOF AIR VALVE



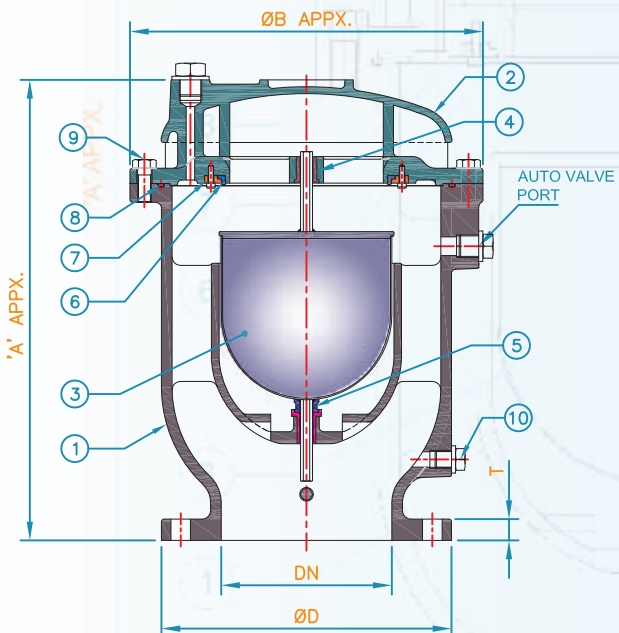
COMBINATION TYPE TAMPER - PROOF AIR VALVE



NO.	PART NAME	MATERIAL
1.	VALVE BODY	C.I. IS 210 Gr. FG 260
2.	FLOAT	ST. STEEL AISI 304
3.	NOZZLE	BRONZE IS 318 LTB2 + NITRILE RUBBER
4.	GASKET	NITRILE RUBBER
5.	COVER	C.I. IS 210 Gr. FG 260
6.	STUDS & NUTS	CARBON STEEL
7.	AUTO VALVE BODY	C.I. IS 210 Gr. FG 260
8.	AUTO VALVE FLOAT	ST. STEEL AISI 304
9.	BOLTS & NUTS	CARBON STEEL
10.	AUTO VALVE NOZZLE	BRONZE IS 318 LTB2 + NITRILE RUBBER
11.	AUTO VALVE COVER	C.I. IS 210 Gr. FG 260
12.	AUTO VALVE GASKET	NITRILE RUBBER

DN (Size)	A	Ø B	Ø D	T
50 mm	335	190	165	16
80 mm	365	210	200	21
100 mm	390	230	220	22
150 mm	500	305	285	23
200 mm	550	390	340	24.5

AIR RELEASE VALVE: NS

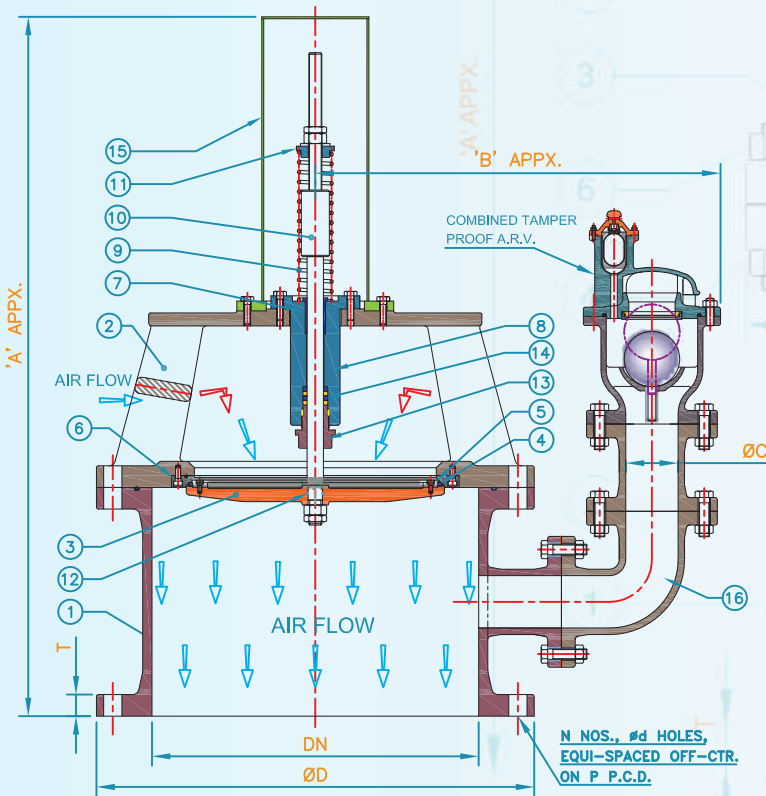


NO.	PART NAME	MATERIAL
1.	VALVE BODY	C.I. IS 210 Gr. FG 260
2.	COVER	C.I. IS 210 Gr. FG 260
3.	FLOAT WITH GUIDE-BAR	ST. ST. AISI 304
4.	BEARING BUSH	BR. IS 318 Gr. LTB2
5.	CUSHION BUSH	NITRILE RUBBER
6.	SEAL RING	NITRILE RUBBER
7.	CLAMPING RING	ST. ST. AISI 410
8.	GASKET	NITRILE RUBBER
9.	HEX. HEAD SCREW	C.S. IS1367 Cl.4.6/4
10.	DRAIN & CLEANING PLUG	CARBON STEEL GALVANIZED.

*DN (Size)	A	Ø B	Ø D	T
100 mm	390	250	220	22
150 mm	490	325	285	23
200 mm	545	418	340	24.5

* : LARGER SIZES ON REQUEST.

ANTI VACUUM VALVE: NS

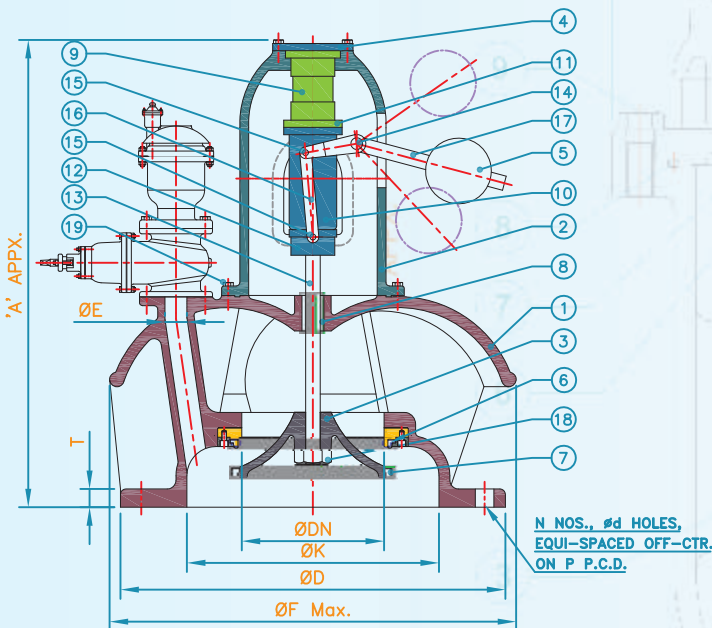


NO.	PART NAME	MATERIAL
1.	VALVE BODY	C.I. IS 210 GR. FG 260
2.	ADAPTOR STOOL	C.I. IS 210 GR. FG 260
3.	DISC	S.G. IRON IS 1865 GR. 500/7
4.	SEAL RING	NITRILE RUBBER
5.	CLAMPING RING	ST. ST. AISI 410
6.	BODY SEAT	BR. IS 318 GR. LTB2
7.	BEARING BUSH	BR. IS 318 GR. LTB2
8.	SUPPORT CYLINDER	ST. ST. ANSI 410
9.	SPRING	ST. ST. ANSI 304
10.	STEM	ST. ST. ANSI 410
11.	UPPER SPRING SEAT	ST. ST. AISI 410
12.	'O' RING FOR STEM	NITRILE RUBBER
13.	PACKING BUSH	BR. IS 318 GR. LTB2
14.	STEM PACKINGS	S.S. AISI 410 & SYNTHETIC
15.	PROTECTIVE COVER	M. S. FABRICATED
16.	BYPASS ADAPTOR	C.I. IS 210 GR. FG 260

*DN (Size)	A	B	ØC	ØD	P	N	Ød	T
300mm	870	455	50	445	400	12	23	27.5
400mm	950	500	50	565	515	16	28	30
500mm	1070	620	80	670	620	20	28	33
600mm	1235	700	80	780	725	20	31	36
700mm	1325	770	80	895	840	24	31	38.5
800mm.	1400	900	100	1015	950	24	34	41.5

* LARGER SIZES ON REQUEST

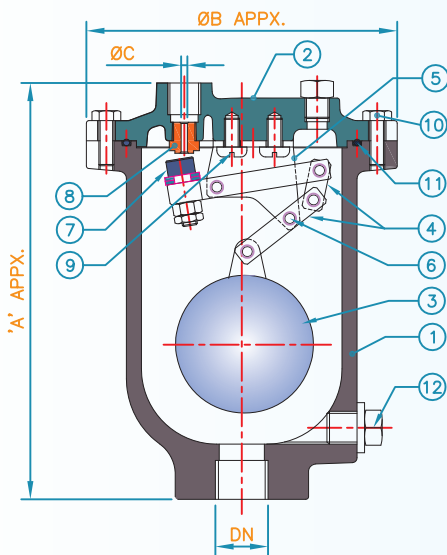
ANTI VACUUM VALVE



NO.	PART NAME	MATERIAL
1.	BODY	C.I. IS 210 GR. FG 260
2.	DOMES	C.I. IS 210 GR. FG 260
3.	DISC	C.I. IS 210 GR. FG 260
4.	TOP COVER	C.I. IS 210 GR. FG 260
5.	WEIGHT	MILD STEEL
6.	BODY SEAT	NITRILE RUBBER
7.	DISC SEAT RING	BR. IS 318 GR. LTB2
8.	BUSH FOR BODY	BR. IS 318 GR. LTB2
9.	DASH POT (FIXED)	BR. IS 318 GR. LTB2
10.	DASH POT (MOVING)	BR. IS 318 GR. LTB2
11.	DASH POT COVER	BR. IS 318 GR. LTB2
12.	DASH POT BASE PLATE	BR. IS 318 GR. LTB2
13.	STEM	ST. ST. AISI 410
14.	HINGE	ST. ST. AISI 410
15.	SET PIN	ST. ST. AISI 410
16.	LEVER	MILD STEEL
17.	BELL CRANK	MILD STEEL
18.	LOCK NUT	ST. ST./ AISI. 304
19.	FASTENERS	C.S. IS 1367 Cl. 4 6/4

*DN (Size)	A	Ø D	Ø K	P	N	Ø d	T	Ø E	Ø F
250mm	685	642	445	584	12	26	26	80	740
300mm	900	785	540	685	16	26	28	80	900
380mm	980	1020	690	845	20	28	28	80	1130

AUTO AIR RELEASE VALVE: NS



NO.	PART NAME	MATERIAL
1.	VALVE BODY	C.I. IS 210 Gr. FG 260
2.	COVER	C.I. IS 210 Gr. FG 260
3.	FLOAT	ST. ST. AISI 410
4.	LEVERS & LINKS	ST. ST. AISI 410
5.	PIVOT BRACKET	MILD STEEL
6.	SET PIN	ST. ST. AISI 410
7.	SEALING MEMBER	S.S. + NITRILE RUBBER
8.	NOZZLE	BR. IS 318 Gr. LTB2
9.	FIXING SCREW	S.S. AISI 304
10.	HEX. HEAD SCREW	C.S. Is1367 Cl. 4.6/4
11.	GASKET	NITRILE RUBBER
12.	(CLEAN/DRAIN) PORT PLUG.	ST. ST. AISI 410

DN (Size)	A	ØB	*ØC
½"	160	132	1.3
¾"	170	140	2.0
1"	185	150	3.0

* NOTE :- OPTIONAL PORT SIZES POSSIBLE.

SALIENT FEATURES :

- Maximized flow area.
- Combination of Air-Vacuum & Air Release Valves.
- Guided floats of Stainless Steel material.
- Sturdy and Robust construction.
- Strong floats which preclude the possibility of necking / deformation due to pressure.
- Choice of MOC including CI / SGI / CS / SS / D2 to suit applications.
- PN 10 / 16 / 25 Pressure Ratings. (Enquire for Others.)
- Complies with the requirements of IS 14845 & AWWA - C512.

SPECIAL FEATURES :

- Efficient Aero-dynamic flow passages.
- One Piece Tamper-proof Cover.
- Straight through Air release opening of large size.
- Guaranteed long life resilient seats.
- Floats of optimum specific gravity ensuring quick response to level changes.
- Aerodynamic performance tested & proven at FCRI.
- Many, many successful, prestigious installations.

NOTES :

- All dimensions are in mm unless otherwise specified.
- Views and dimensions are typical. They may change in specific cases.



An ISO 9001 Certified Company

R & D MULTIPLES (METAL-CAST) PVT. LTD.

Head Office : 106, United Industrial Estate, Mogul Lane, Mahim, Mumbai 400 016, Maharashtra, India.
Tel : 4004 4425/26/27/28/29 | **Fax :** 4004 4430

Plant 1 : A-1/17, GIDC, Pardi - 396 125, District Valsad, Gujarat.

Plant 2 : Survey No. 304, Village Balda, Pardi - 396 125, District Valsad, Gujarat.

Engineering Division Office : C2-403, Saudamini Complex, Srl. No. 101/1, Bhusari Colony, Paud Road, Kothrud, Pune 411 038, India.

E-mail : mumbai@rdmultiples.com | info@rdmultiples.com

Company & Corporate information, Accreditations Dealer's Stamp